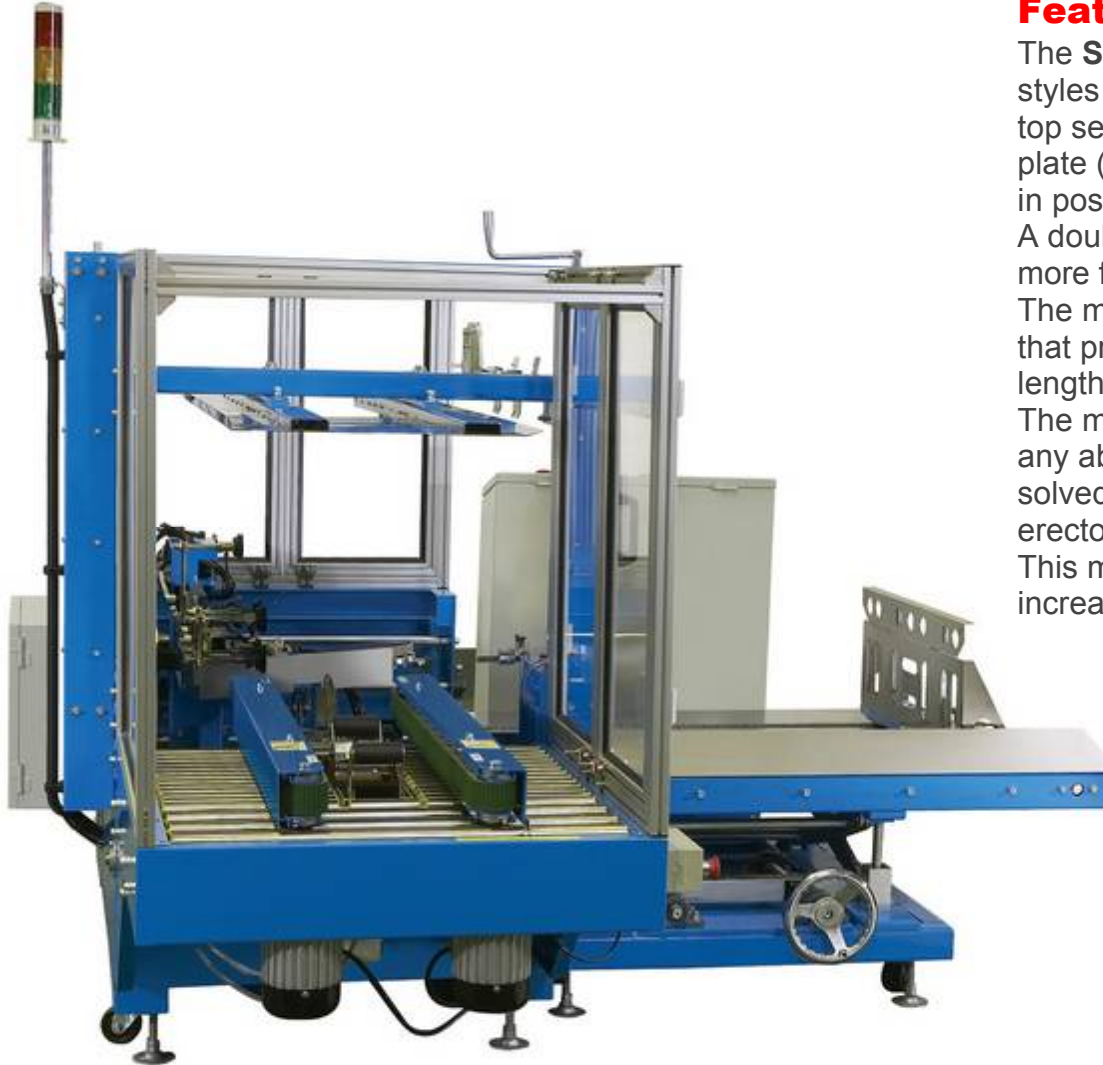


SPEEDWAY

SPM-568ERT

Automatic Carton Erector - Vertical Seal

Side Belt Drive



Manufactured in Taiwan

Features:

The **SPM-568ERT** automatically forms and bottom seals different styles and sizes of cartons that are then ready to be filled and top sealed. It uses a new taping head incorporating a V shaped plate (patented) designed to keep the tape straight and in position for consistent sealing of every carton.

A double type vacuum sucking arm is used to erect cartons more firmly.

The main drive mechanism uses a self-aligning ball bearing bracket that provides exact and precise sealing, lowers noise and lengthens belt life.

The machine is equipped with a LCD digital display to show any abnormal conditions and to allow any problems to be solved in a short time. Detectors are used to show no tape, erector failure, bottom sealing failure, & no cartons at the magazine. This machine has simple adjustments for easy change over which increases production efficiency.



Speedway Packaging Machinery Inc.

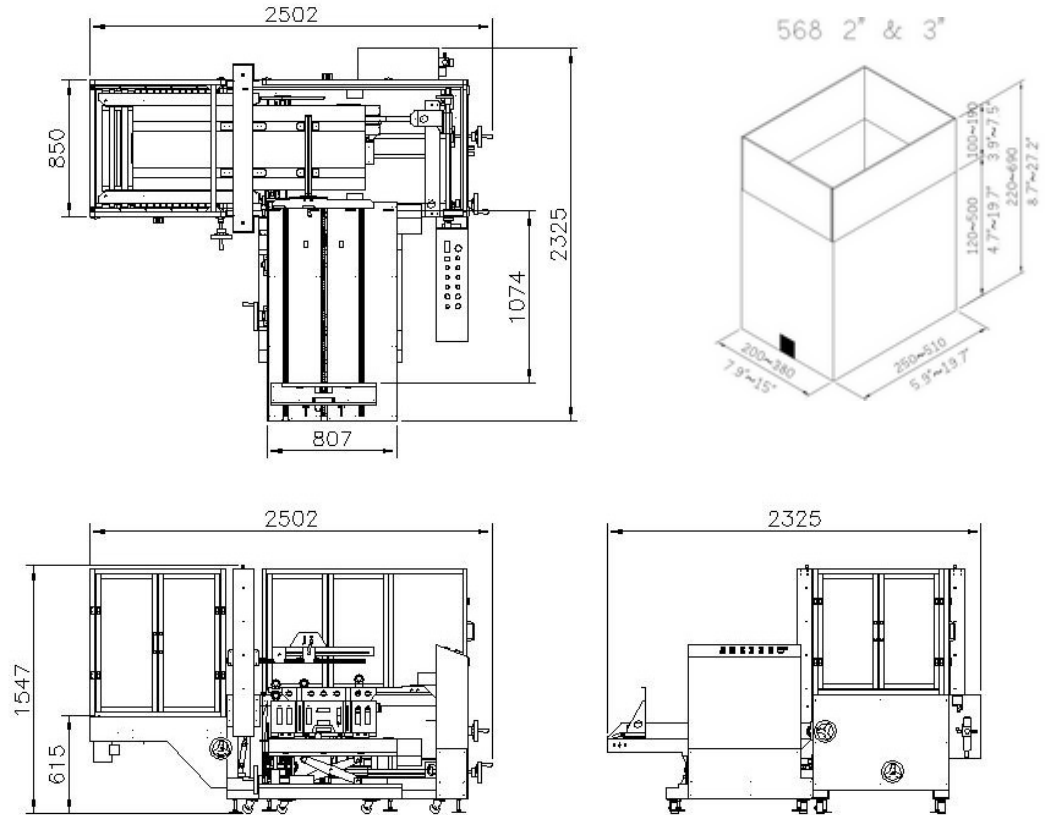
www.spmi.ca

SPM-568ERT Automatic Carton Erector Vertical Seal

Specifications

Voltage	110V 1 PH 60HZ
Sealing Speed	10 m (33') / min (L 300 x W 300 x H 300 mm)
Capacity	9 - 12 cartons/min
Tape width	2" or 3" (option)
Loading magazine	150 pcs (3 ply - 7 mm thickness) or 50 pcs (5 ply - 15 mm thickness)
Working height	615 mm (24")
Consumption	460W
Max. sealing size	L 510 x W 380 x H 500 mm L 20" x W 15" x H 20"
Min. sealing size	L 250 x W 200 x H 120 mm L 10" x W 8" x H 5"
Shipping Weight	820 kg / 1800 lbs

Dimensions



Specifications are subject to change without notice-

Distributed by:

SPEEDWAY PACKAGING MACHINERY INC.

P.O. Box 520

10 Gormley Industrial Ave., Unit 1

Gormley, Ontario L0H 1G0

905-888-5344

Manufactured in Taiwan